

Archaeological monuments

unrespectfully destroyed
marginally researched
endangered

Detect
Record nondestructively
interpret

Geophysical techniques

Reliable fundamentals -
proper surveying and mapping

Large scale research -
fast geophysical measurements

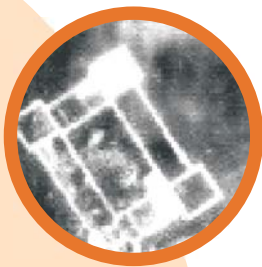
Special solutions -
integrated geophysical methods

fast
extensive
nondestructive

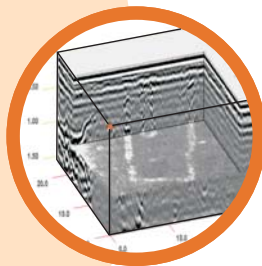
Magnetometer survey records small variations of the geomagnetic field. The ditches of the monumental iron age cairn at the Glauberg (Germany).



Resistivity surveys detect the electrical resistance of the subsoil. Map of a roman villa at Zwingenberg (Germany).



Ground-penetrating radar logs the reflexions of electromagnetic waves three-dimensionally. 3D block of the foundations of a roman building with well at Kelsterbach (Germany).



Ground surveying with modern instrumentation allows modelling of virtual terrain surfaces. Decayed gateway of the prehistoric hillfort Alteburg (Germany).



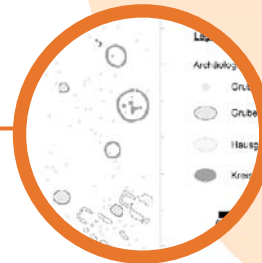
From measurement ...

Magnetometer with four probes for the survey of vast areas. Fluxgatemagnetometer Förster Ferex DLG 4.032 in operation.



... to interpretation...

Longstanding experience, archaeological competence, reliable scientific reports. The mapping of archaeological features on the route of a proposed road scheme allows planning reliability for heritage authorities and property developers.



... and beyond it...

we serve our partners further on: we create more maps, paste our measurements to results of other survey data, we take part in archaeological analysis, we compose scientific publications and present archaeological results during conferences and exhibitions. With lectures, courses and laboratories, we also get involved with the education at universities.

Posselt & Zickgraf Prospektionen GbR since 1997 a modern archaeological service company and a reliable scientific partner in more than 300 domestic and foreign projects:

- Neolithic Longhouses, Diemarden (Lower Saxony)
Universität Göttingen, Seminar für Ur- und Frühgeschichte
- Neolithic Settlement, Markowa (Poland)
Uniwersytet Jagielloński, Instytut Archeologii, Krakow
- Neolithic Fortified Settlement, Rungwa (Nigeria)
Universität Frankfurt/M, Abteilung Archäologie und Archäobotanik Afrikas
- Early Bronze Age Circular Enclosure, Zackmünde (Saxony-Anhalt) - *Universität Halle-Wittenberg, Institut für Prähistorische Archäologie*
- Early Bronze Age Tell, Ulug Depe (Turkmenistan)
La maison de l'Archéologie et de l'Ethnologie, Nanterre
- Bronze Age Mining Relics, Boschkakol (Kazakhstan)
Deutsches Bergbau-Museum, Bochum
- Bronze Age Tombs, Monte da Ribeira (Portugal)
EDIA Empresa de Desinvestimento e Infraestruturas do Alqueva, S.A., Beja
- Hallstatt Period Hilltop Enclosure, Göllersreuther Platte (Bavaria) - *Universität Würzburg, Lehrstuhl für vor- und frühgeschichtliche Archäologie*
- Hallstatt Period Barrow Grave, Kleinklein (Austria)
Landesmuseum Joanneum Graz
- La Tène Period Princely Barrow Grave, Glauberg (Hesse)
Landesamt für Denkmalpflege Hessen, Wiesbaden
- Iron Age Saltworks, Seilletal (France)
Musée des Antiquités nationales, Saint-Germain-en Laye
- Ancient City, Kleonai (Greece)
Universität Marburg, Archäologisches Seminar
- Roman Settlement and Military Camp, Oedenburg (France)
Universität Freiburg, Inst. für Provinzialrömische Archäologie und École Pratique des Hautes Études IVème Section, Paris
- Roman Villa, Bertrange (Luxembourg)
Musée National d'Histoire et d'Art, Luxembourg
- Roman Villa, Loig (Austria)
Land Salzburg, Landesarchäologie, Salzburg
- Germanic Settlement Mound, Lüdingworth-Osterende (Lower Saxony) *Archäologische Denkmalpflege der Stadt Cuxhaven*
- Viking Age Emporium, Haithabu (Schleswig-Holstein) - *Stiftung Schleswig-Holsteinische Landesmuseen Schloß Gottorf, Schleswig*
- Early Islamic City, Kharab Sayyar (Syria)
Universität Frankfurt/M, Abteilung Vorderasiatische und Klassische Archäologie
- Medieval Castle, Schönenbuel (Switzerland)
Dipl. Ing. Jakob Obrecht, Frenkendorf
- Medieval Glassworks, Gieselwerder (Hesse)
Kommission für Archäologische Landesforschung, Hessen e. V., Wiesbaden
- Medieval Church, Derrygonnelly (Northern-Ireland)
Archaeological Development Services Ltd., Belfast
- Baroque Palace Garden, Ansembourg (Luxembourg)
Service des Sites et Monuments Nationaux, Luxembourg
- Fortified Maori Settlement, Napier, (New Zealand)
Geometria Ltd., Auckland
- Modern Church and Graveyard, Wöpplinsberg (Baden Württemberg) - *Stadt Emmendingen*
- Concentration Camp, 20th Century, Walldorf (Hesse)
Magistrat der Stadt Mörfelden-Walldorf, Heimatmuseum Mörfelden

Practical Execution

- Magnetometer surveys
- Resistivity surveys
- Ground-penetrating radar
- Susceptibility surveys
- Topographic surveys and presentation as surface plots, contour maps etc.
- Rectifying and georeferencing of aerial photos
- GIS applications
- Survey concepts - Landscape archaeology - Building land opinions

Available on request:

Company profile including a selection of case studies, geophysical methods and instrumentation, list of publication, references, quotations ...

Archaeological Interpretation, Documentation and Presentation

- Greyscale plots
- Interpreting drawings
- Presentation of results to various types of maps
- Scientific report including intensive interpretation of archaeological structures
- Publication and presentation via various media
- Longterm assistance of projects

Posselt & Zickgraf Prospektionen GbR

Office Traisa
Martin Posselt M.A.
Fürthweg 9
Germany - 64367 Mühlthal
Fon/Fax: +49 (0)6151 - 1369338
Mobiltel.: +49 (0)172 - 6763087
Posselt@pzp.de

Office Marburg
Benno Zickgraf M.A.
Friedrichstraße 14
Germany - 35037 Marburg
Fon/Fax: +49 (0)6421 - 924614/15
Mobilfunk: +49 (0)172 - 6763095
Zickgraf@pzp.de